

SZENARIO SPACE INVADERS

PERFECT CITY BLOCK 2050
VON COSTANZA COLETTI

HOW DENSITY CAN MAKE THE CITY

von Costanza Coletti

Everybody wants to live in Wattland.

The count of urban population rises in a very short time. Government and city institutions can not manage an housing program for this amount of people. What happens if every new inhabitant needs to built a house? The city is abandoned to itself and could turn to be a huge slum. Many little communitites are more efficient in taking quick decisions. The inhabitants of the Block understand that the only way is to work together in order to face the future high density. A Manual for Self-Made Architecture is redacted and distributed to the incomers. The rules to integrate the new buildings in the pre-existent block sign the border between urban regulation and expressive freedom.

First the existing flats are divided in smaller ones to host more people. there is no need for much space when everything works on the internet. Than huts and shacks of the most different materials start filling the inner courts of the block and stratify organically. As the tridimensional empty space between the buildings becomes thicker, urban connections start to appear. Small bridges, stairs and gangways run across the old buildings and between the new ones creating a three-dimentional connection system.

The high density of the city creates a new way of living public spaces. The usable space is no more a floor surface: squares become volumes as Globuli© are conceived. As an event has to take place, a Globuli© with the required features can be ordered in internet and 3d printed where needed.

Globuli© are pneumatic structures made of extra light plastic fabrics.

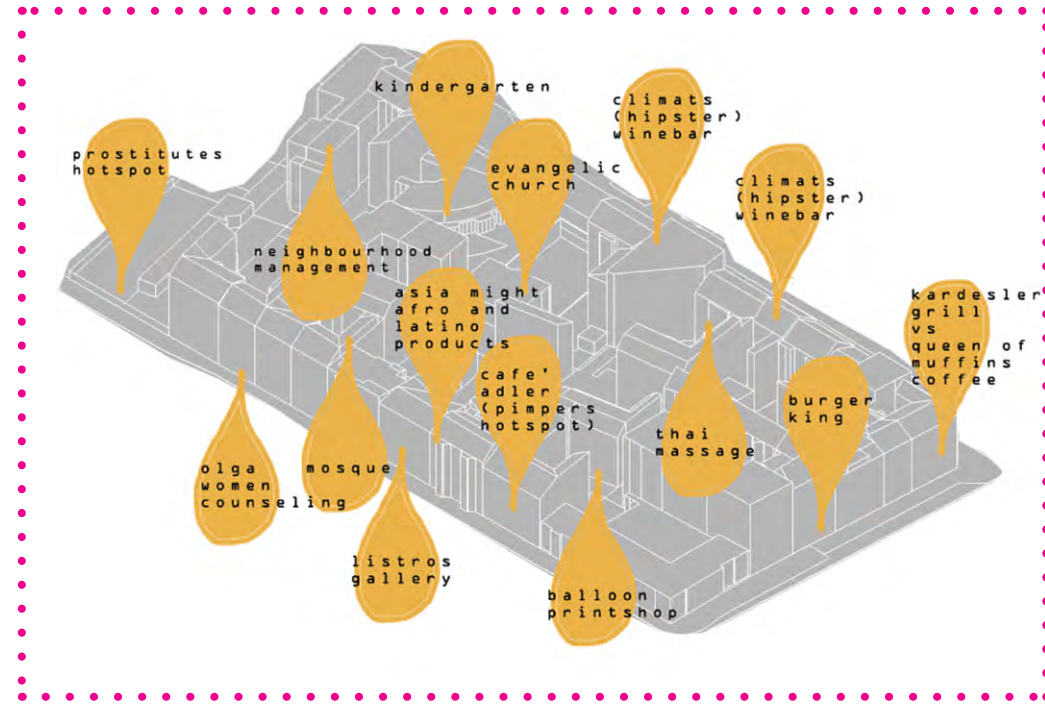
They can fit the different space needs throught various, dimensions, transparencies and shapes. The inside environment can be also designed and transformed throught sound, light and hologram projection.

No attachment, no affection, no urban memory, no human tracks to be left; the place is there untill half past five, then collapses and disappears. The new digital landscape gives birth to a deterritorialized common world.

As the technology increases till relationships are digitalized, the richer people start living and working in individual hi-tech capsules. Now they are able to move across the mountain-shaped dwelling to reach a favourite place to live.

After years of fast, chaotic and dramatic growth, the Berlin metropole experiences a more static stage. The first floors of the buildigs start being abandoned in favour of small houses/capsules on the top of the heterogenous dwellings. The streets, no more needed for transportation, slowly turn into green stripes of woods. The abandoned, old and obsolete buildings are slowly taken from the nature and the block becomes a mass of ruins with some aerial, light capsule stopping for a while on its top.

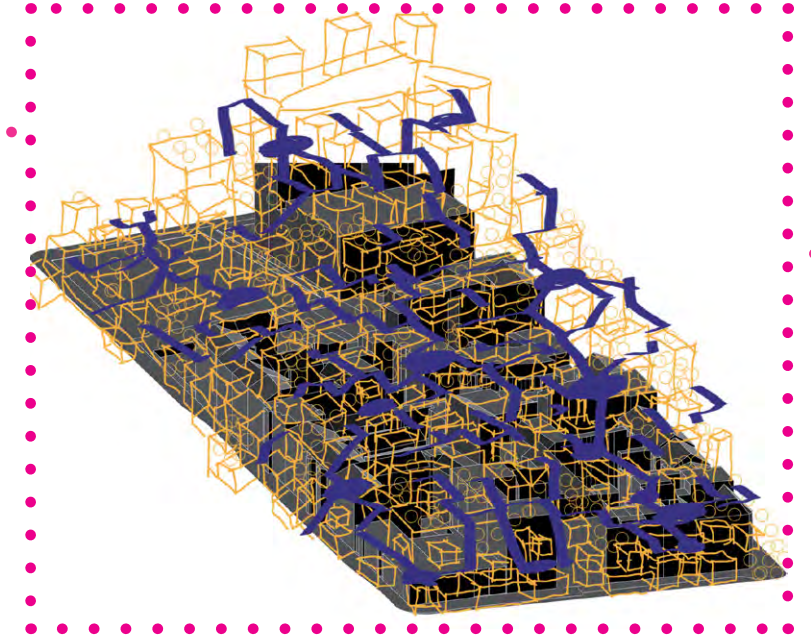
DENSIFICATION



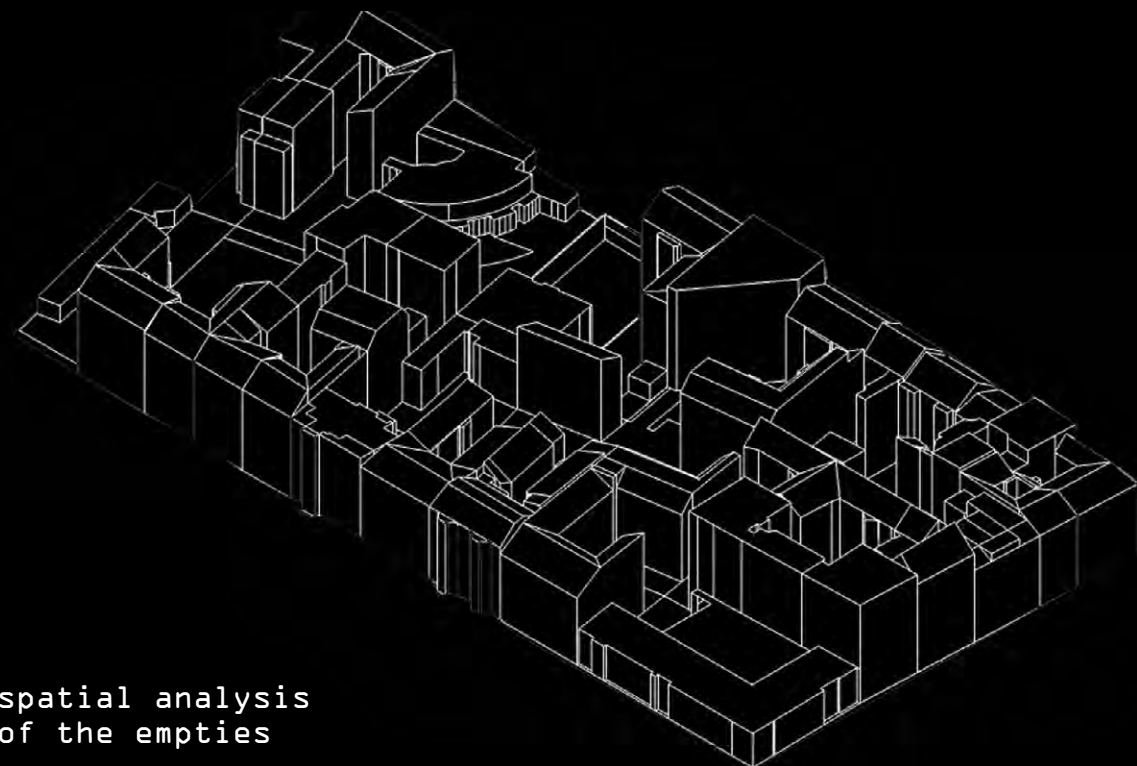
cityblock=blockcity



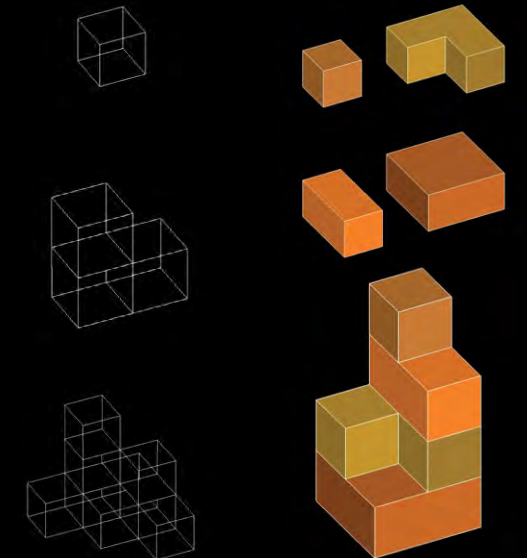
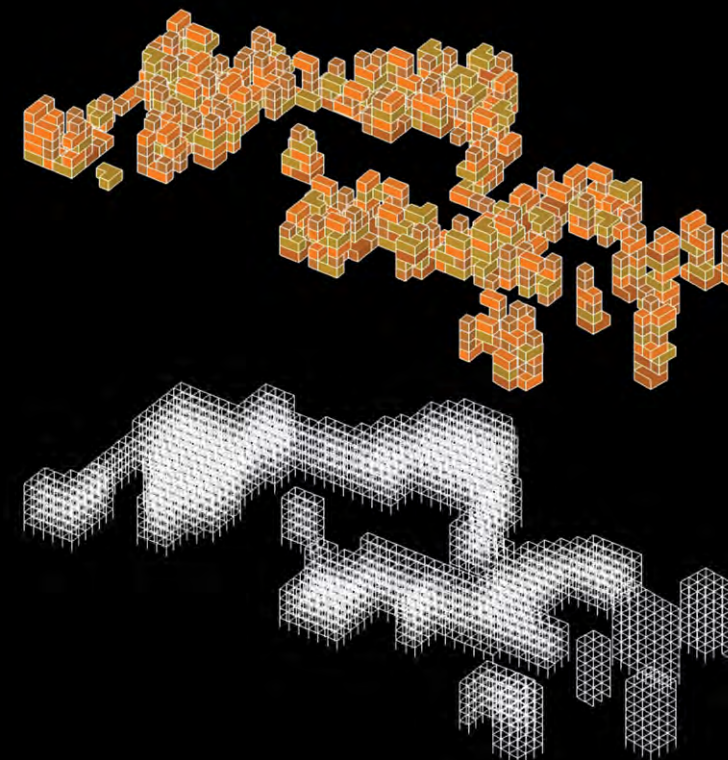
uncontrolled densification of the city

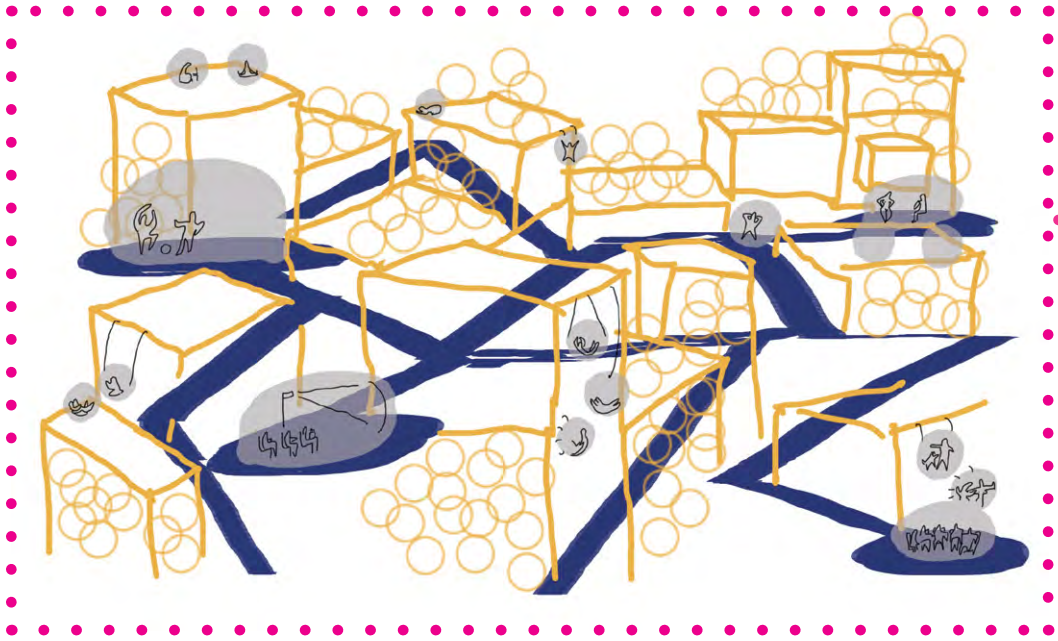


slumcityblock

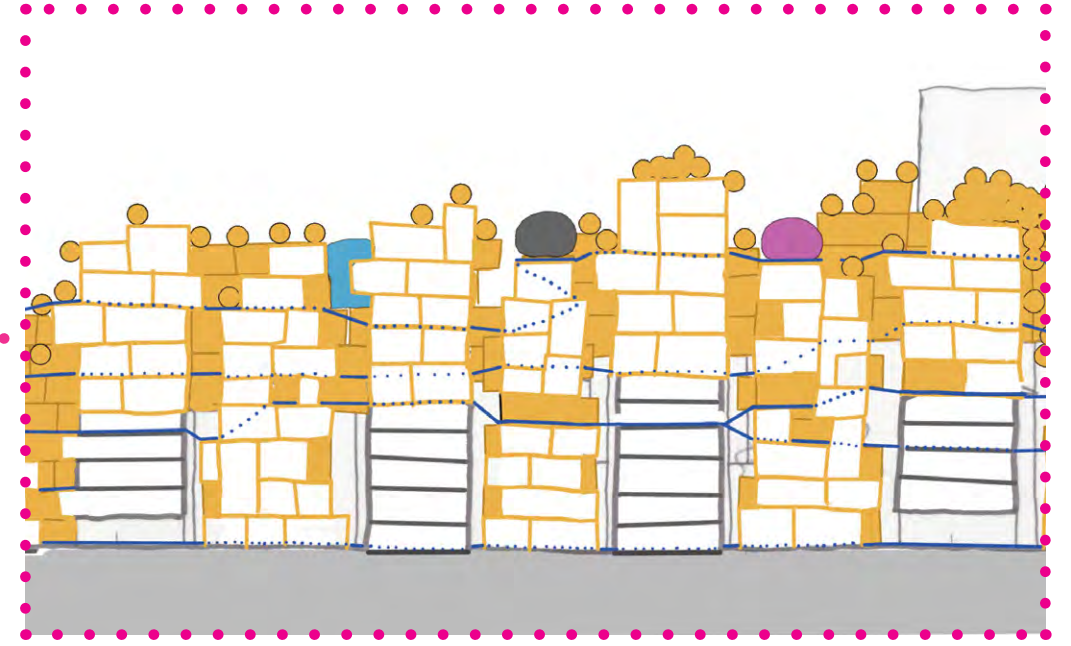


spatial analysis of the empties

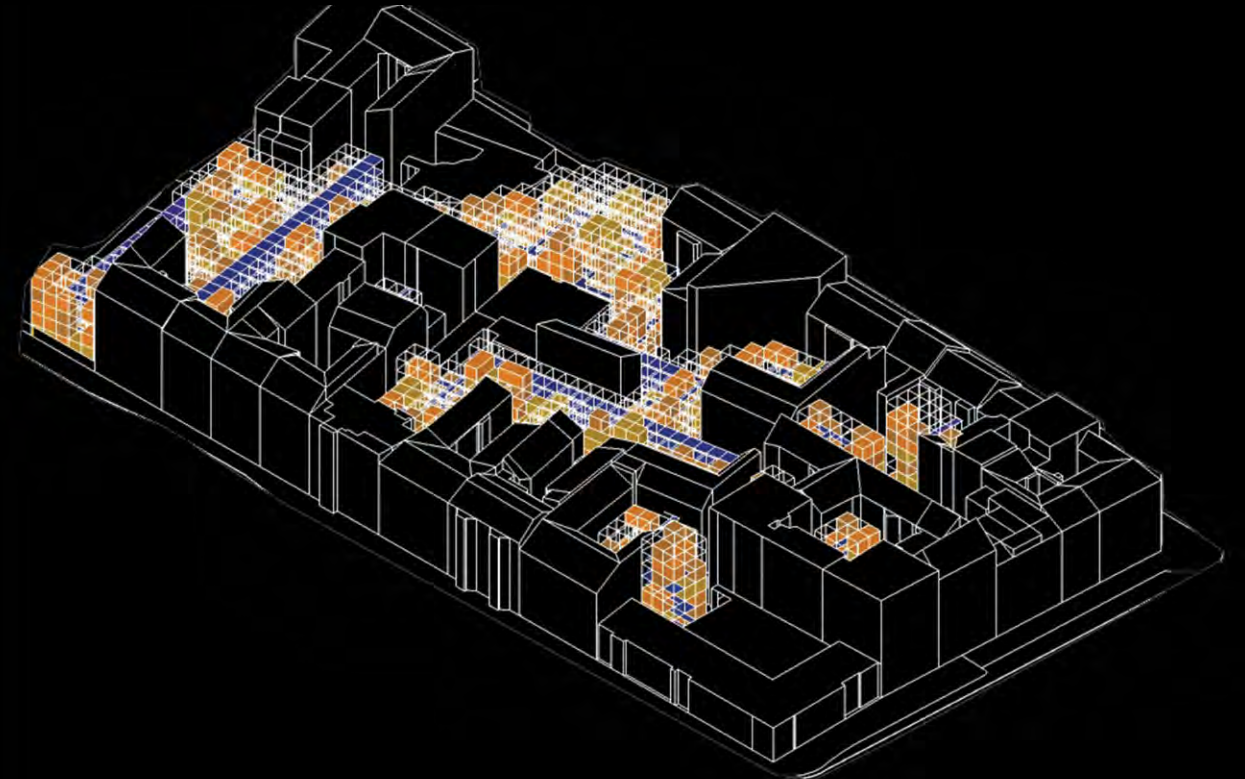
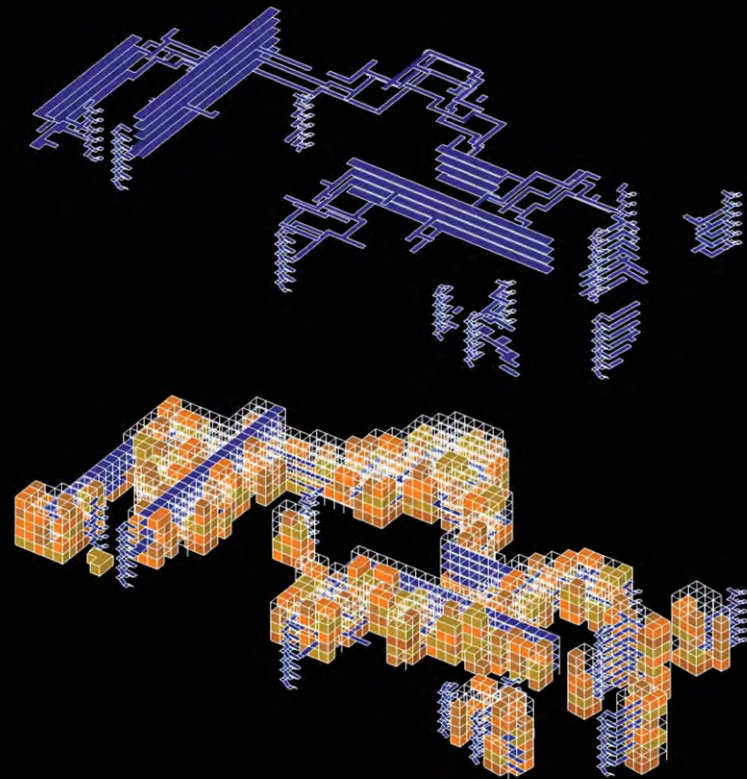




life in the slumcityblock



spontaneous filling of the space



TIMELINE



2015

many different functions in the block



cultural, religious and social mix of inhabitants and users

the block is famous for a high concentration of prostitutes and pimps



there is a strong territorial net taking care of the local problems

gentrification process makes always more artists and gallerists coming

welcome to the block

a guide for the new dweller

introduction



everybody wants to live in wattland



still there is people who doesn't want immigrants



but we want to face the future

2025

mass-migration to the metropolis of wattland



conflict between power urban development and property

no more contact between institutions and citizens: decentralization of power

people try to solve the housing problem on their own

redaction and distribution of the self-planning manual for the new dwellers

the block organizes a community network



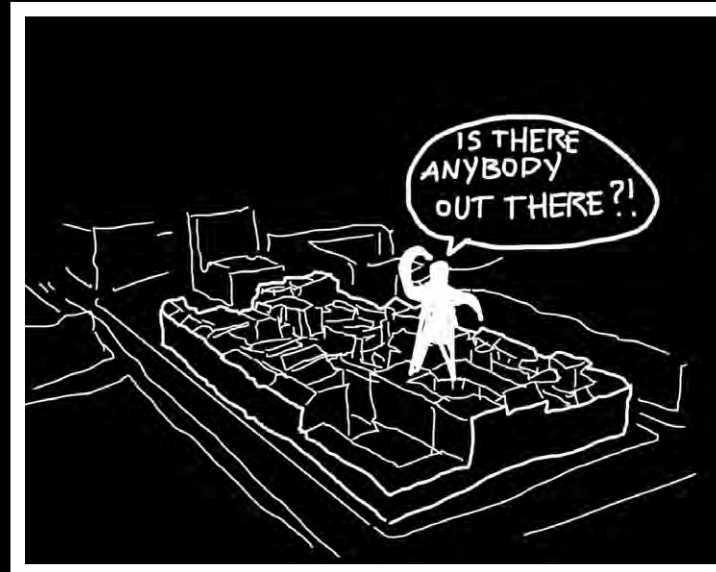
first vernacular buildings on the rooftops and in the courts



the future will be a veri dense city



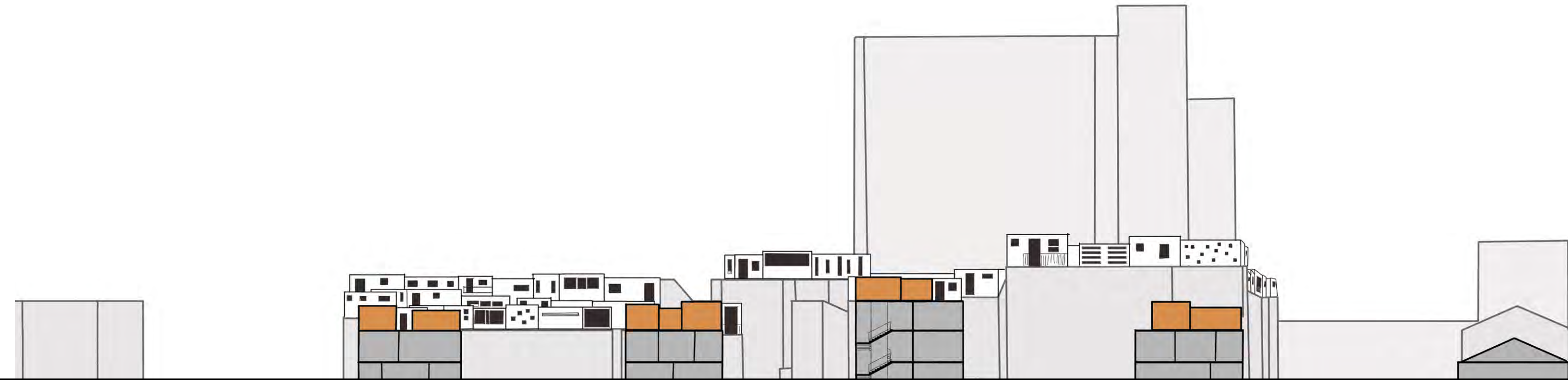
and we will have to find our place again



we can't expect anyone to represent us anymore



we have to deal with what we have in common





2035

fullfill of every empty space + vertical growing



bridges and stairs are built parallel to the houses and connected to pre-existent staircases to allow circulation



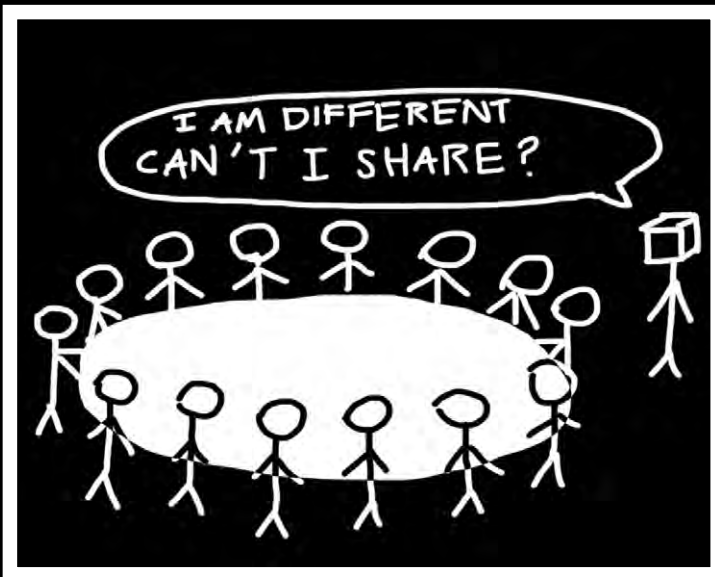
commercial and productive functions distribute themselves in the upper levels



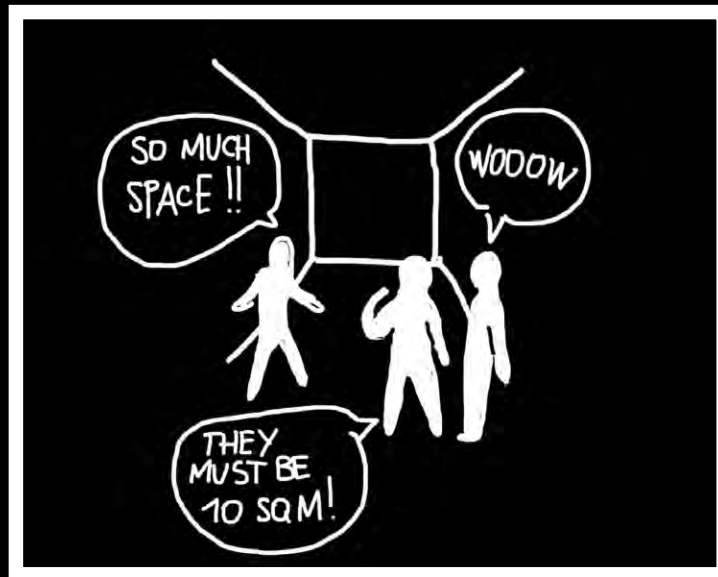
the common activities share the few public spaces alternating in time

the city-block becomes a block city and starts earning watts increasing the wealth of the inhabitants

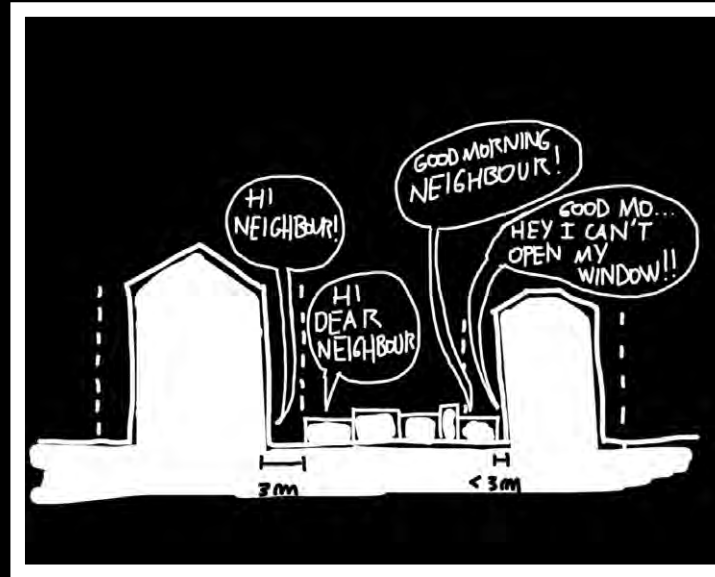
digitalization of work and relationships provoke isolation and new affective needs



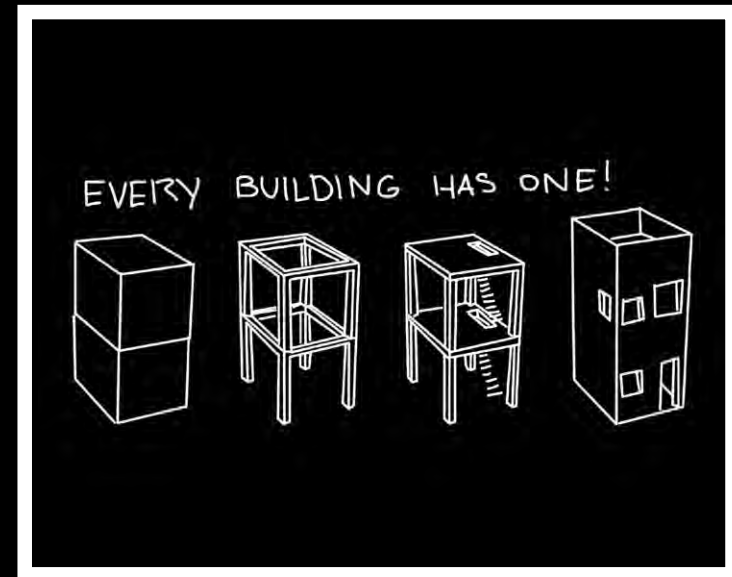
it doesn't mean that we all have to become the same



but we are sharing a resource and we have to take care of it



so here are some basic rules to build your new house: #1 THE AIRBAG



#2 THE STRUCTURE



2050

decrease of densification



capillar diffusion of 3d printers minimize the need of transportation



the pathways form a tridimensional constitute a tridimensional connections system



streets fall in disuse and start being covered with earth and cultivated

the richest people start living and working in hightech capsules

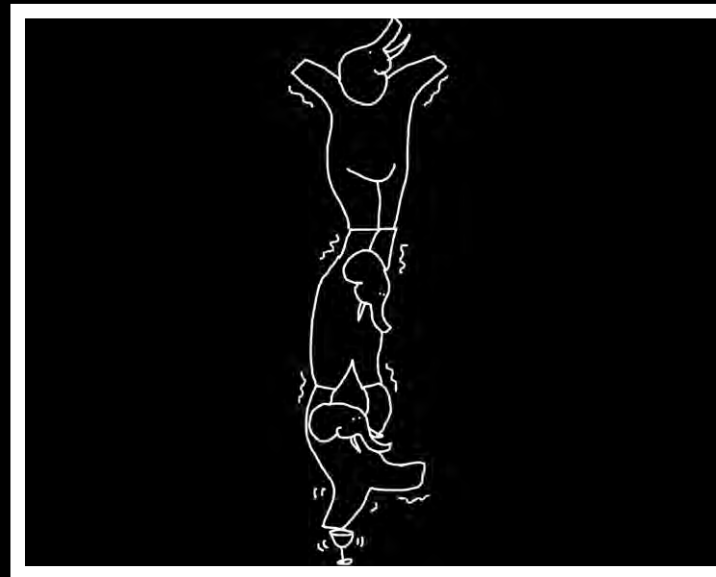
the new conception of temporary public spaces inspires the production of GLOBULI



we have to take care of the structure



because the building process will go on and on.....and on for a while



and your house will have to sustain much more than three elephants



#3 RESPECT THE PUBLIC SPACE here you can use a bit of good sense



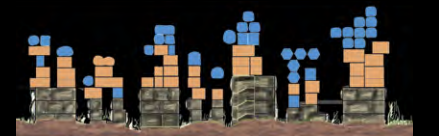
2080



abandonement of the old buildings

all the jobs are digitalized and the food is printed at home

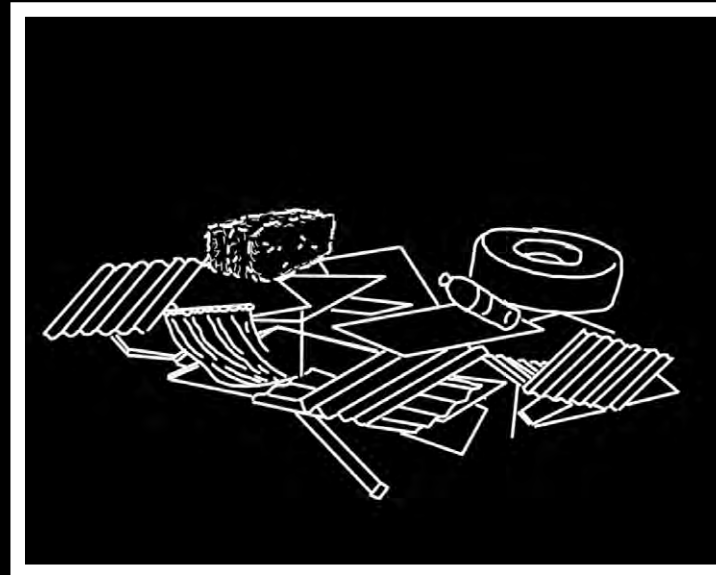
dwellings grow in the sky and the earth level is left to a natural dissolution process



huge diffusion of the live-work capsules

no more need for the old commercial and productive functions

the abandoned street fields become forests



it's not nice to live in a city of darkness

#4 LOOK FOR INDEPENDENCE because no institution will help you

for the rest, you can use every material that you like

the spontaneous variety will be our style

STORIES OF REAL LIFE

there is always someone at work: shapes, materials and styles change constantly

dreams and memory check up, then ready to get up

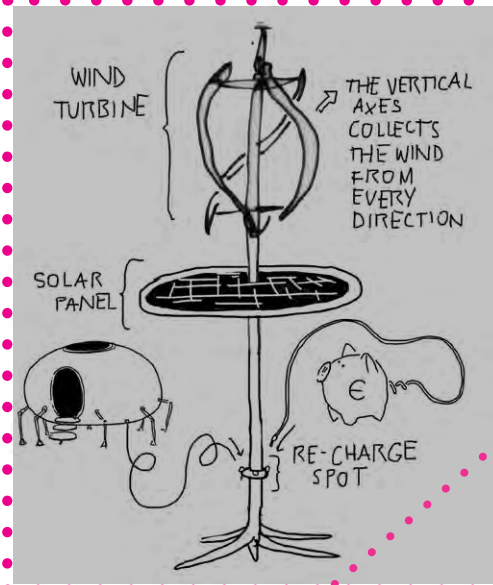
direct creativity: think and print

obsolete laptops are still in use among the poorest people

hologram movie projector took place of tv screen

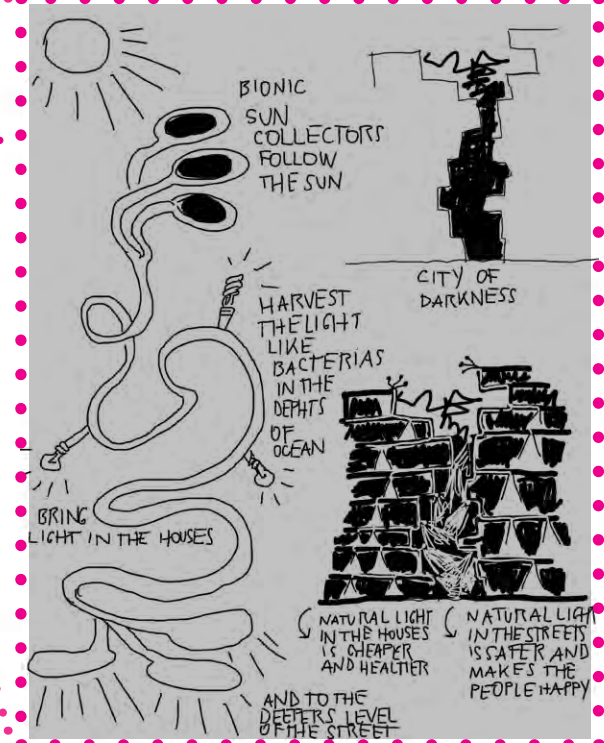
who can't afford a food printer goes to the "print and go" fresh printed fast food

kids are often left alone with a digital baby sitter



ENERGY ACCUMULATOR

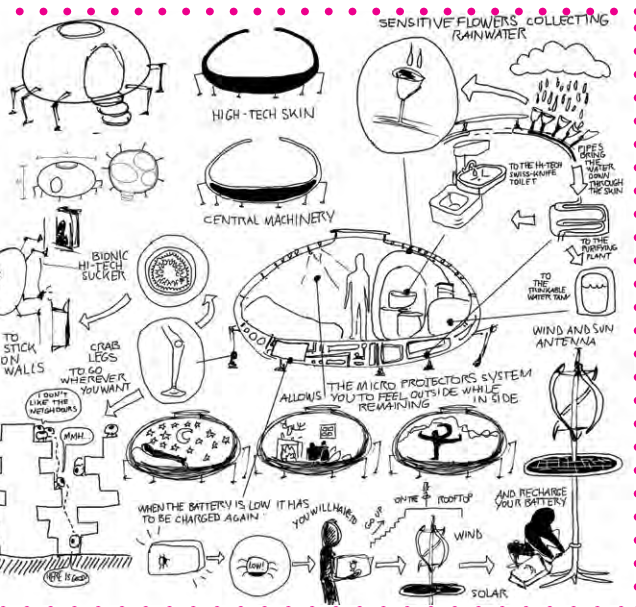
digital pots: the plants can communicate their needs



BIONIC LIGHT COLLECTOR

diagnose machines in a medical studio tell you the substances that your body needs. The diagnose goes than direct in the food printer

analogic kindergarten for conservative parents



ENERGY ACCUMULATOR

once Cafe Adler - a hotspot for the local pimpsers - Cafe Eigelb since some years is owned by a corporation of prostitutes. It offers relieve for every body and heart necessity

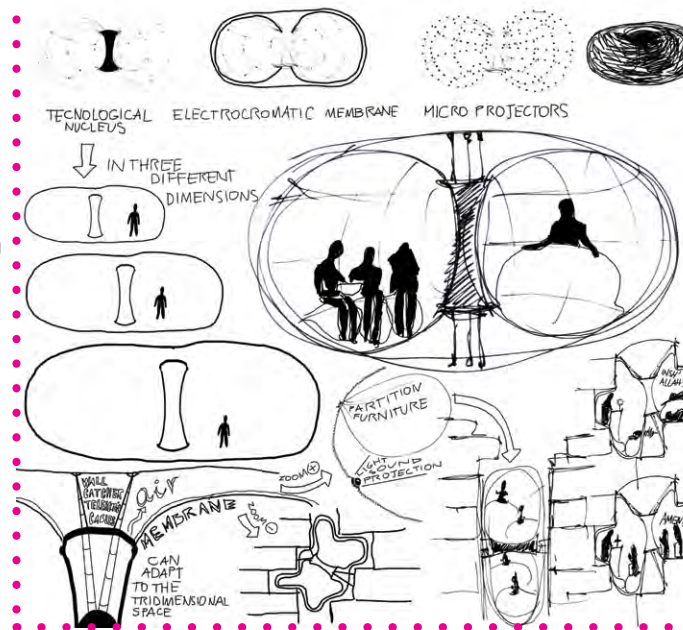
vintage bed and breakfast: here the time stopped to 2020

the religions are mixed: people worships gods of many different traditions without prejudices

if it all becomes too much there is always the digital psychotherapist

some of the houses on the lower levels are abandoned. The dwelling grows skyways and the old buildings are becoming obsolete

still there are small workshops run by one or two people. Men are cheaper than machines and the products are very affordable



GLOBULI

PROJEKTREIHE **PERFECT CITY BLOCK - ARCHIPEL BERLIN 2050**

SPACE INVADORS, Costanza Coletti

WERK.BERG, Anna Firak

STADT ÜBER STADT, Julius Jell

NEURON, Judith Kinzl

VERTIKALE KOMMUNE, Hannah Kordes

Semesterprojekt SS 2013

BETREUUNGSTEAM

Matthias Böttger, Franz Koppelstätter, Katharina Weinberger

LAYOUT

Anna Firak, Katharina Weinberger

